

# MONTHLY MEMBERSHIP PROGRESS REPORT

District 132

Results as of: 5/31/2024

GMT:

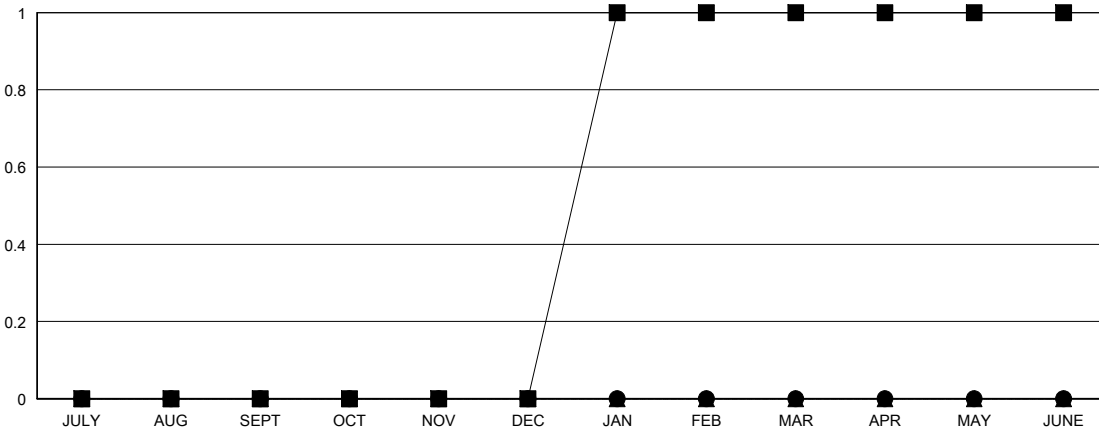
LOCATION REPUBLIC OF NORTH MACEDONIA

GMT CA

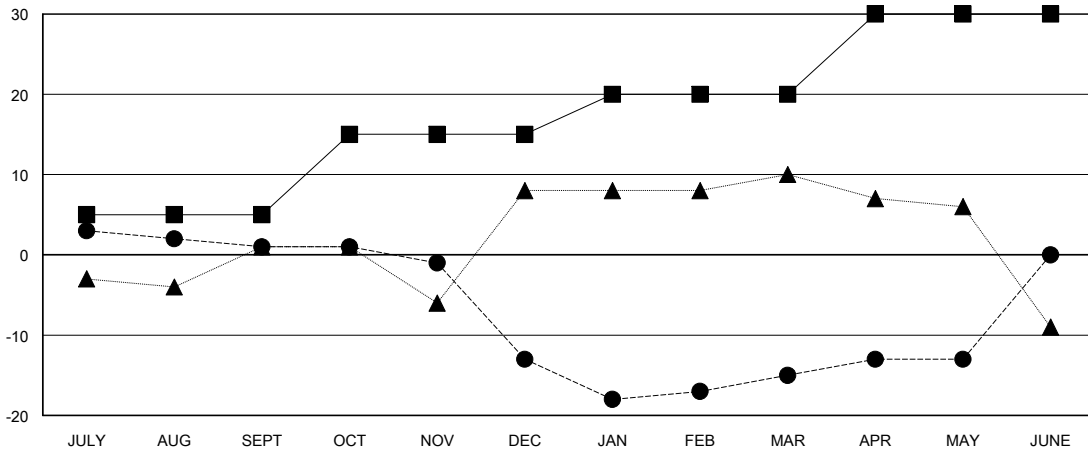
Clubs			
RESULTS FOR 2023-2024			
QUARTER	NEW CLUB GOAL	NEW CLUBS	DROPPED CLUBS
JULY/AUG/SEPT	0	0	0
OCT/NOV/DEC	0	0	1
JAN/FEB/MAR	1	0	0
APR/MAY/JUNE	0	0	0

Members			
RESULTS FOR 2023-2024			
QUARTER	MEMBER GROWTH NET GOAL	MEMBER GROWTH ACTUAL	DROPPED MEMBERS ACTUAL (including transfers)
JULY/AUG/SEPT	5	15	4
OCT/NOV/DEC	10	8	22
JAN/FEB/MAR	5	9	6
APR/MAY/JUNE	10	15	7

GOALS AND ACTUAL NEW CLUBS CUMULATIVE



GOALS AND ACTUAL MEMBERS CUMULATIVE



DROPPED CLUBS: 1	8 CLUBS OF 30 ADDED 1 OR MORE NEW MEMBERS	<b>GENDER DISTRIBUTION</b> MALE 270 (58.19%) FEMALE 194 (41.81%)
<b>DROPPED MEMBERS</b> DECEASED 0 CLUB CANCELLED 5 OTHER 34 TOTAL 39	<a href="#">CLICK HERE FOR CUMULATIVE MEMBERSHIP DATA</a>	TOTAL FAMILY UNIT MEMBERS 49 FAMILY MEMBERS PAYING HALF DUES 25